

Microsoft edge Workflow

1 Click "Download"

Program Updates

! Please ensure the program is closed before running the update. Installing the update with the program open may result in data loss.

Donations Co-ordinator Update(s)

↓ **v7.12**
requires v7

Download

↓ **v6.15**
requires v6

Download

↓ **v5.15**
requires v5

Download

↓ **v4.51**
requires v4

Download

↓ **v3.08**
requires v3

Download

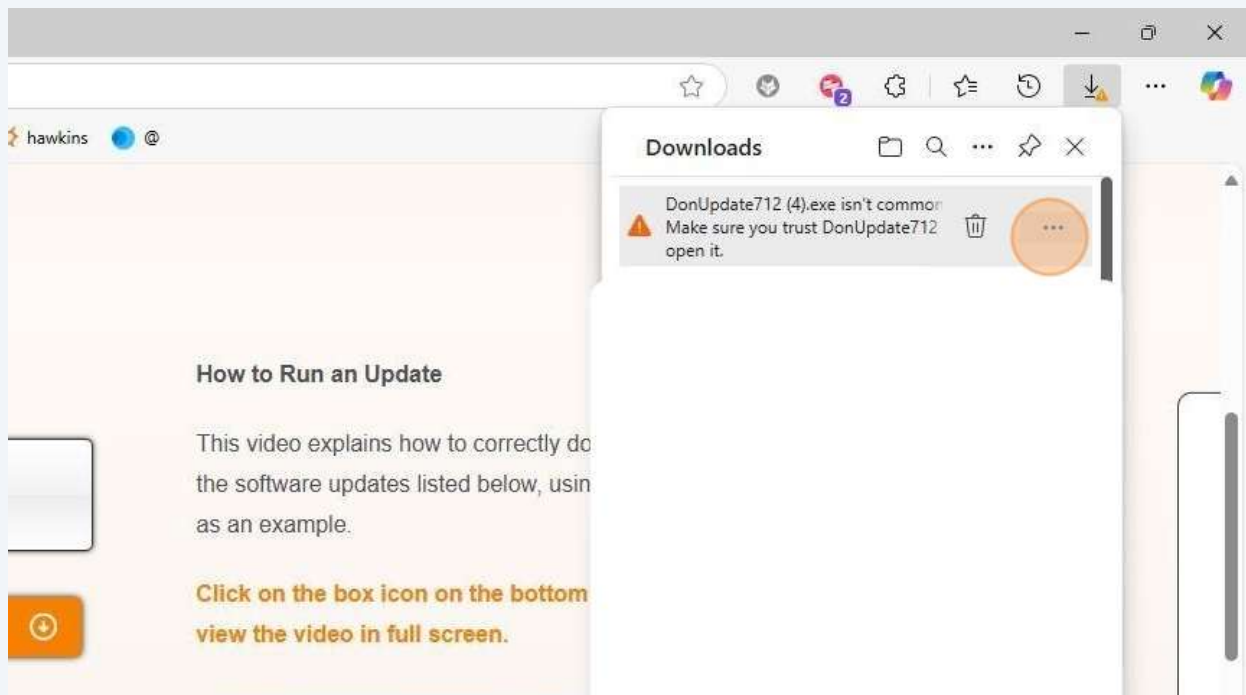
How to Run an Up

This video explains the software update as an example.

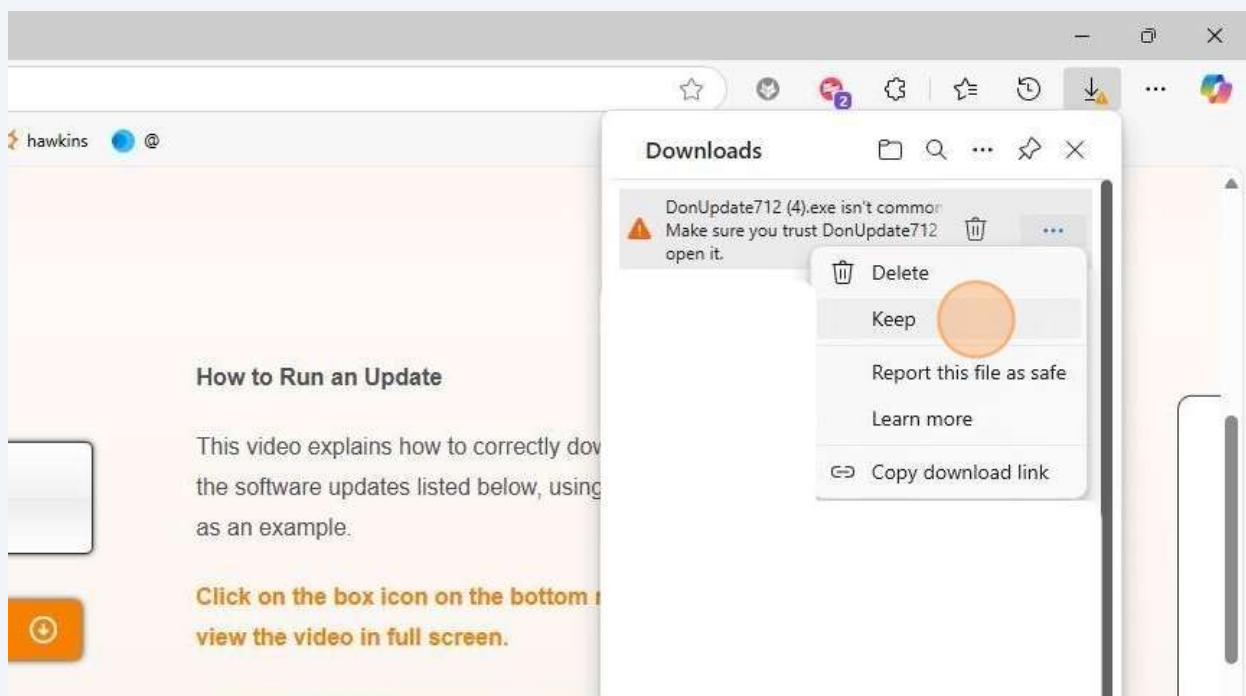
Click on the box to view the video in full



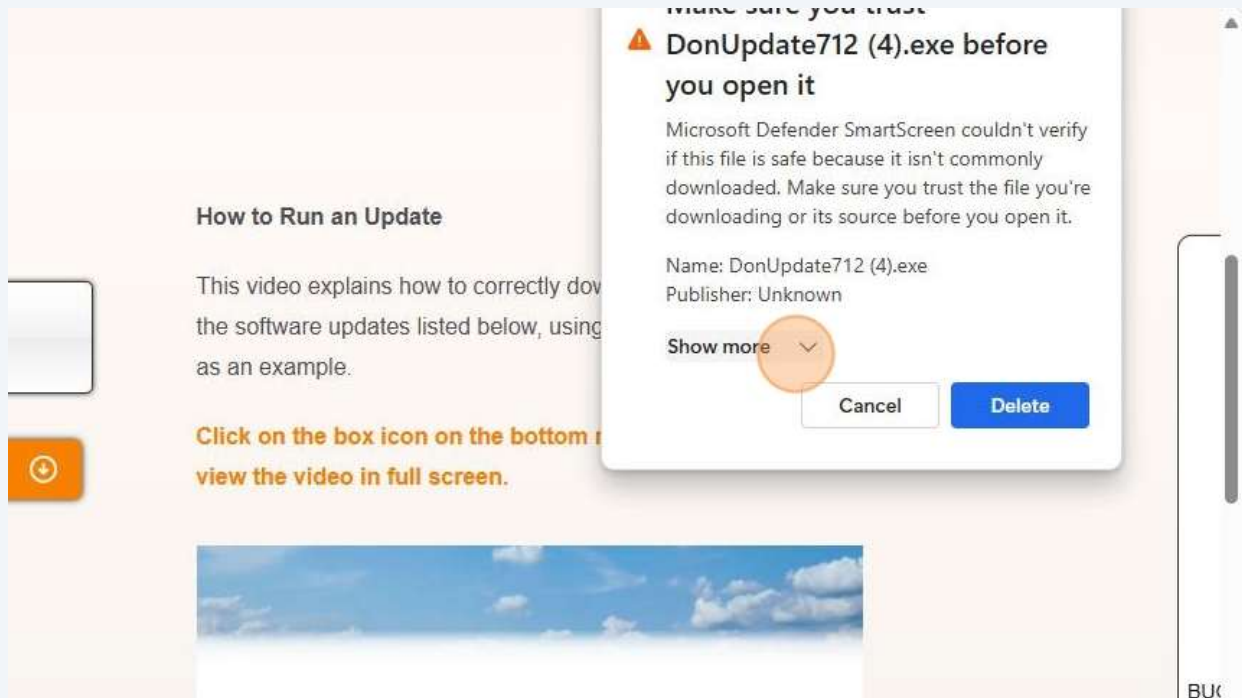
2 Click "More actions"



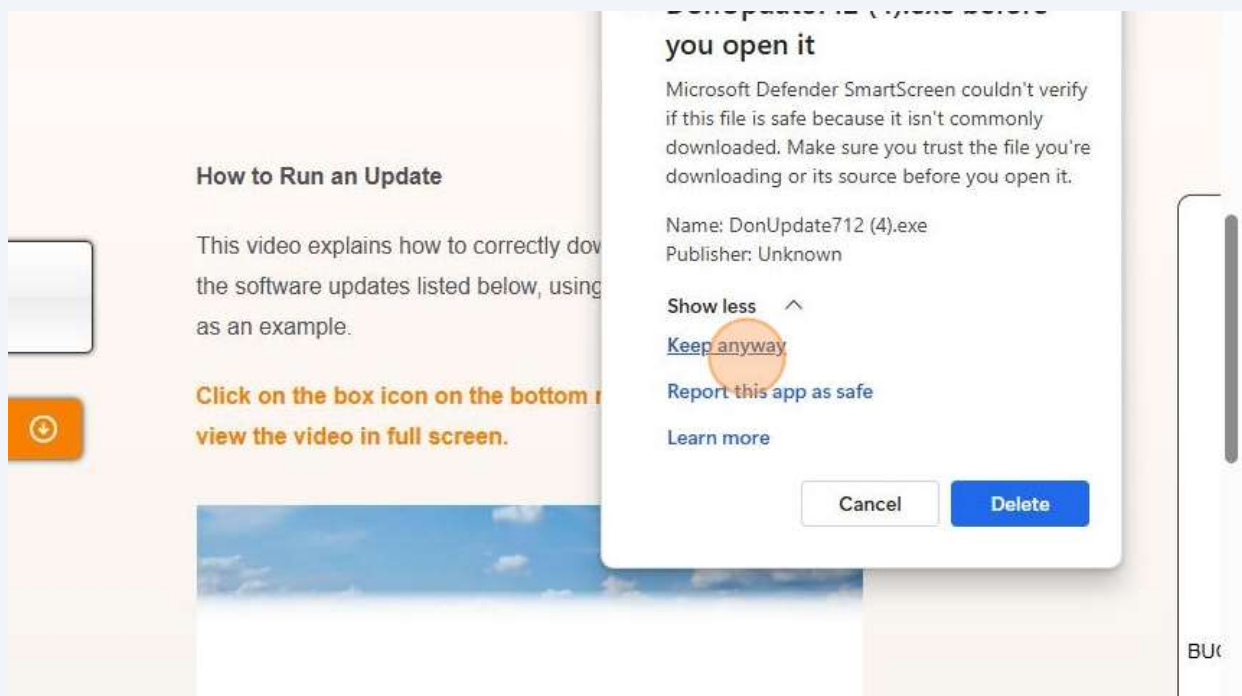
3 Click "Keep"



4 Click here

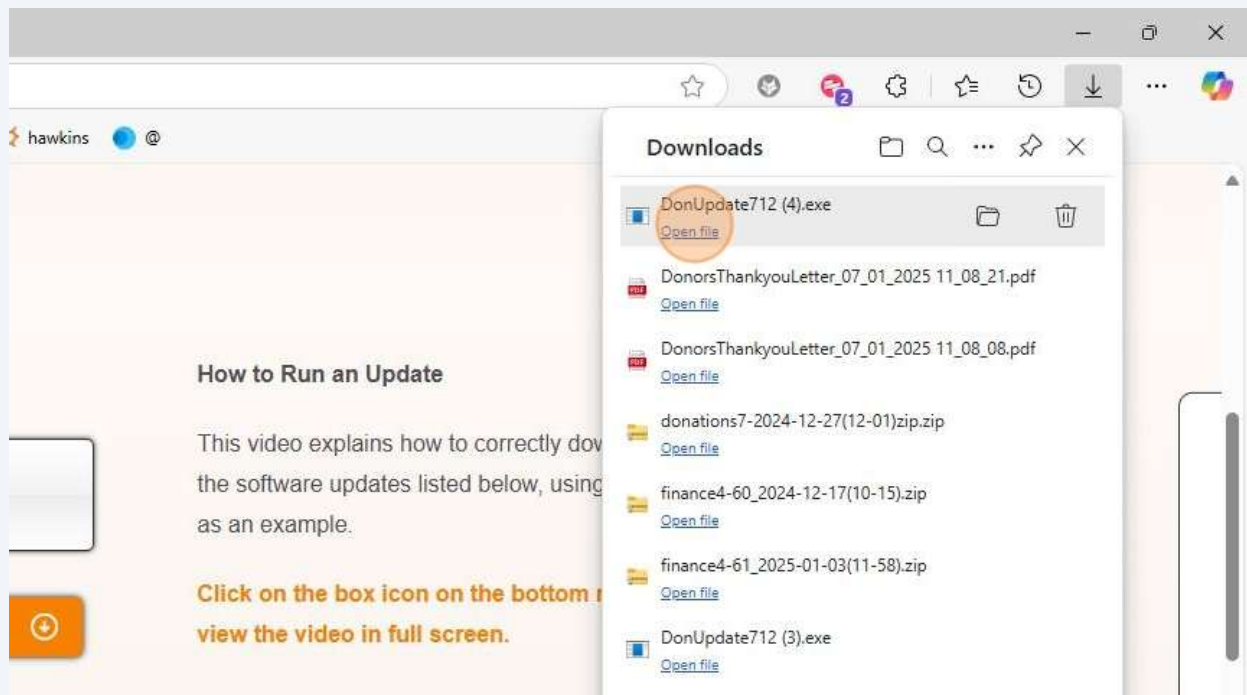


5 Click "Keep anyway"



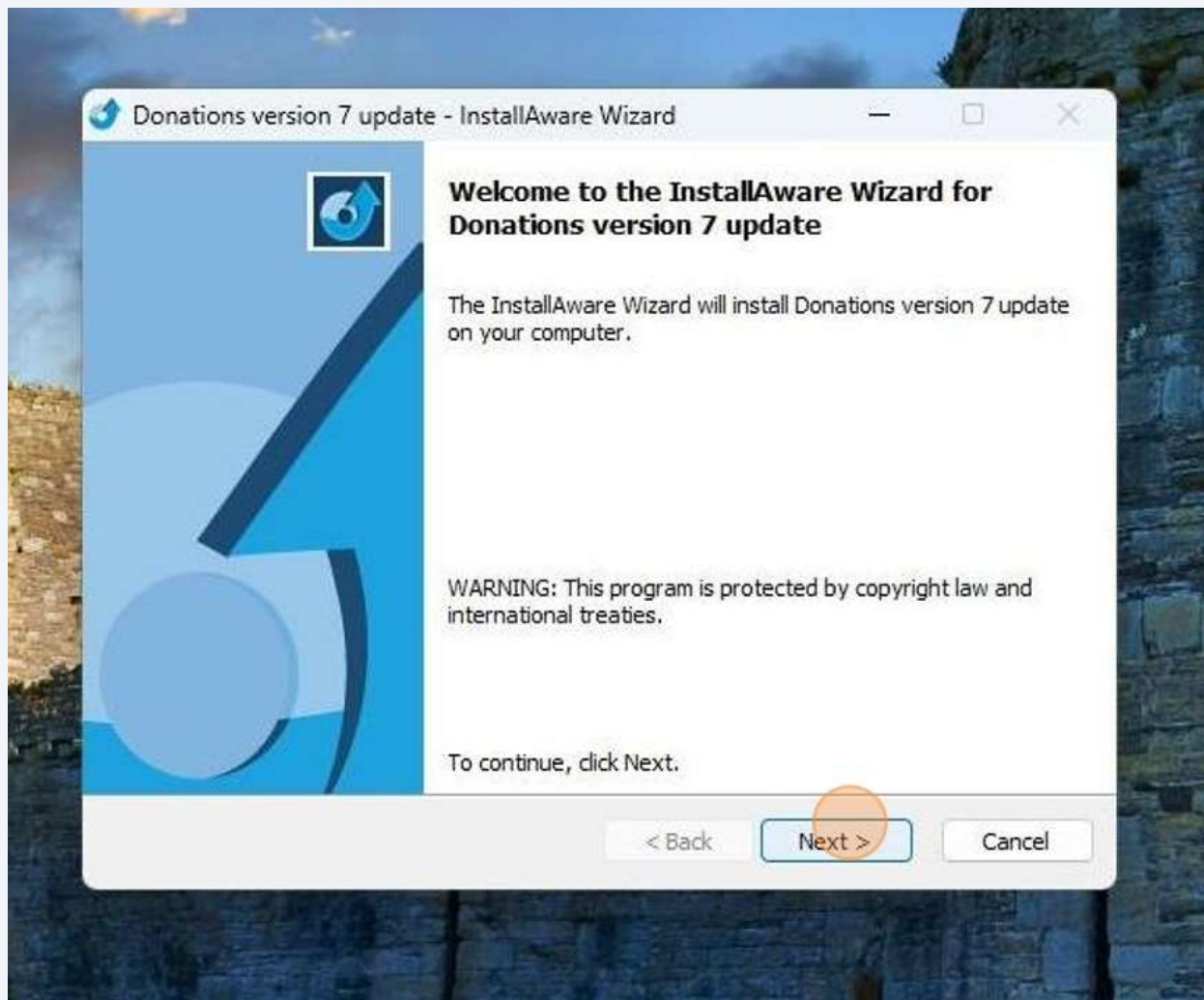
6

Click "Open File"

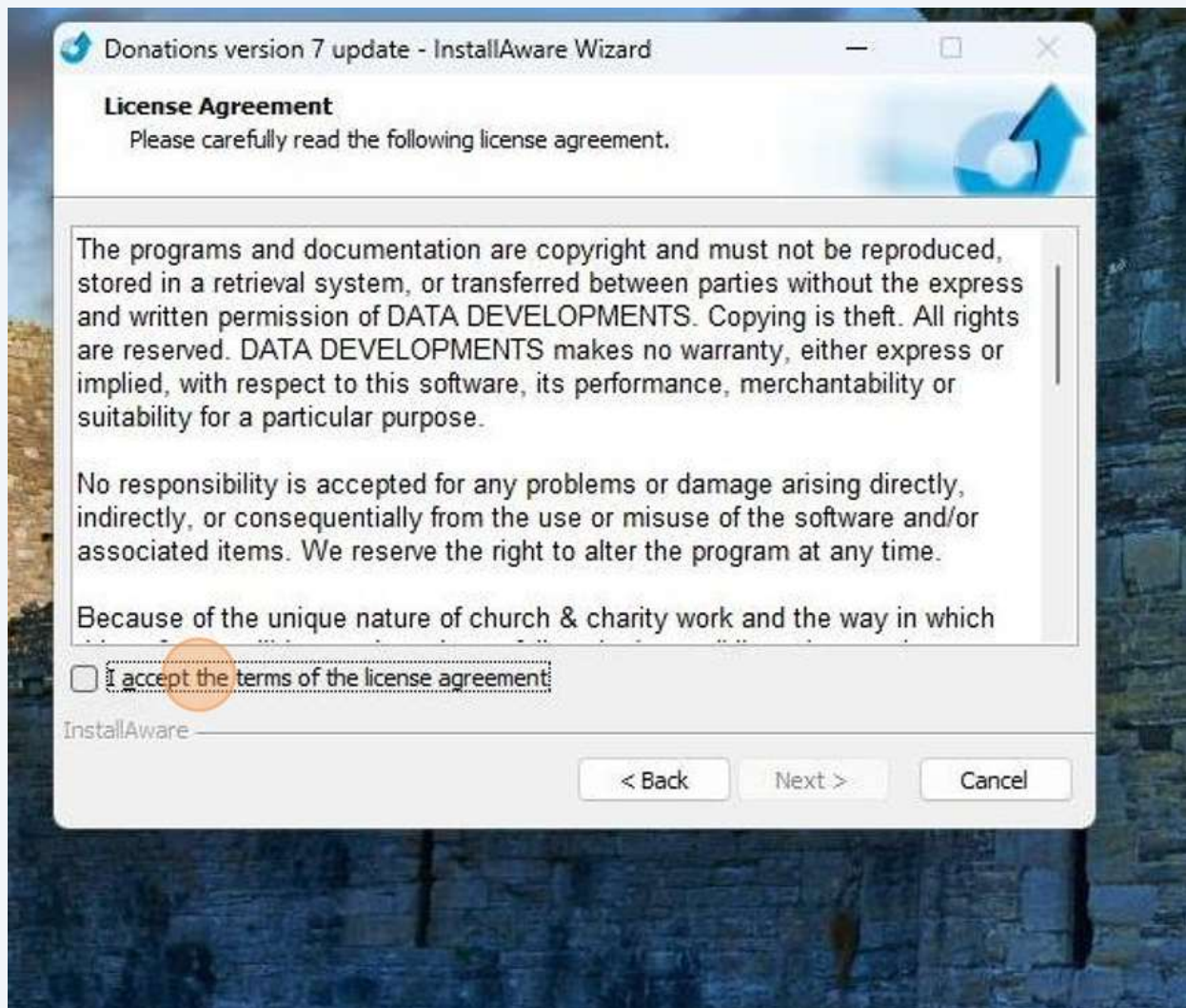


7

Click "Next >"

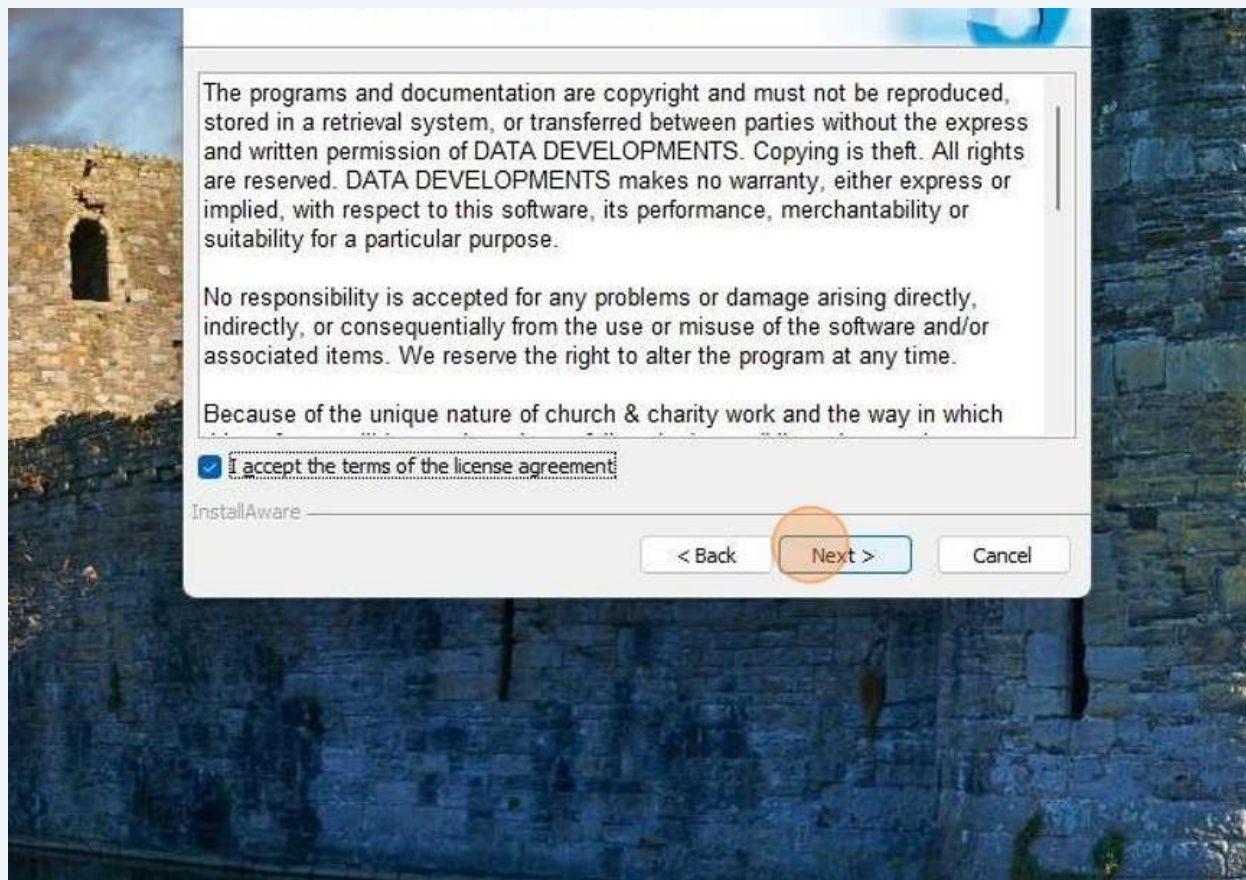


- 8 Click "I accept the terms of the license agreement"

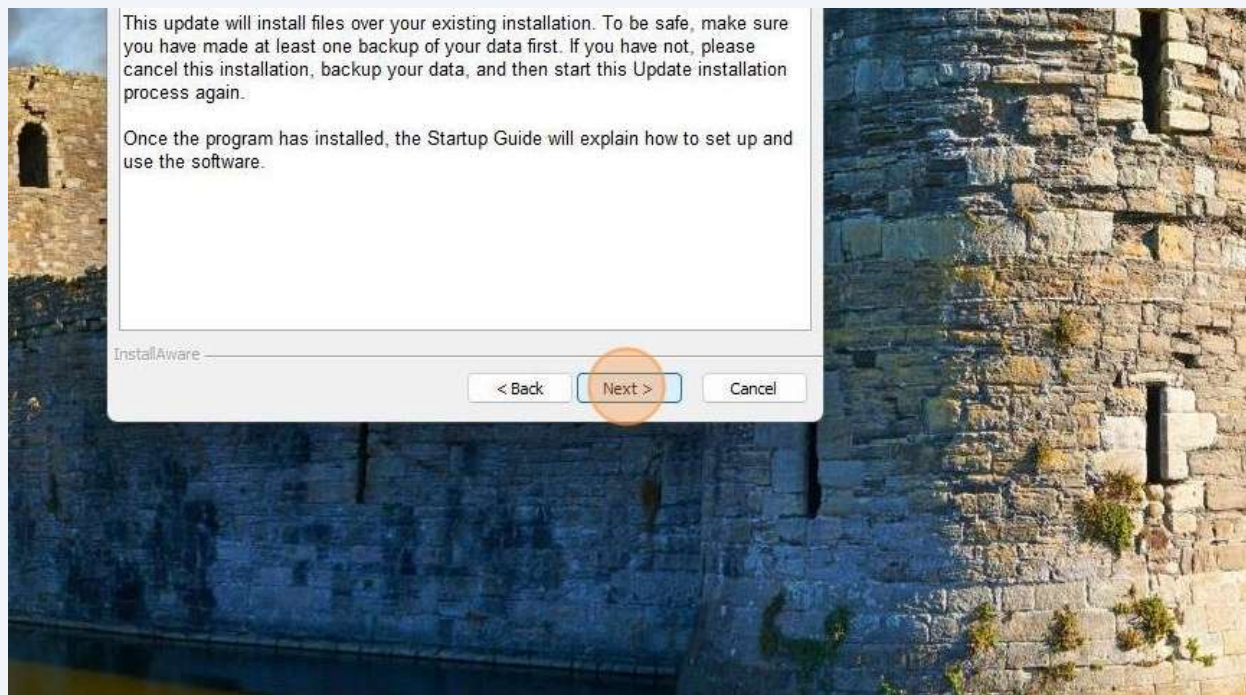


9

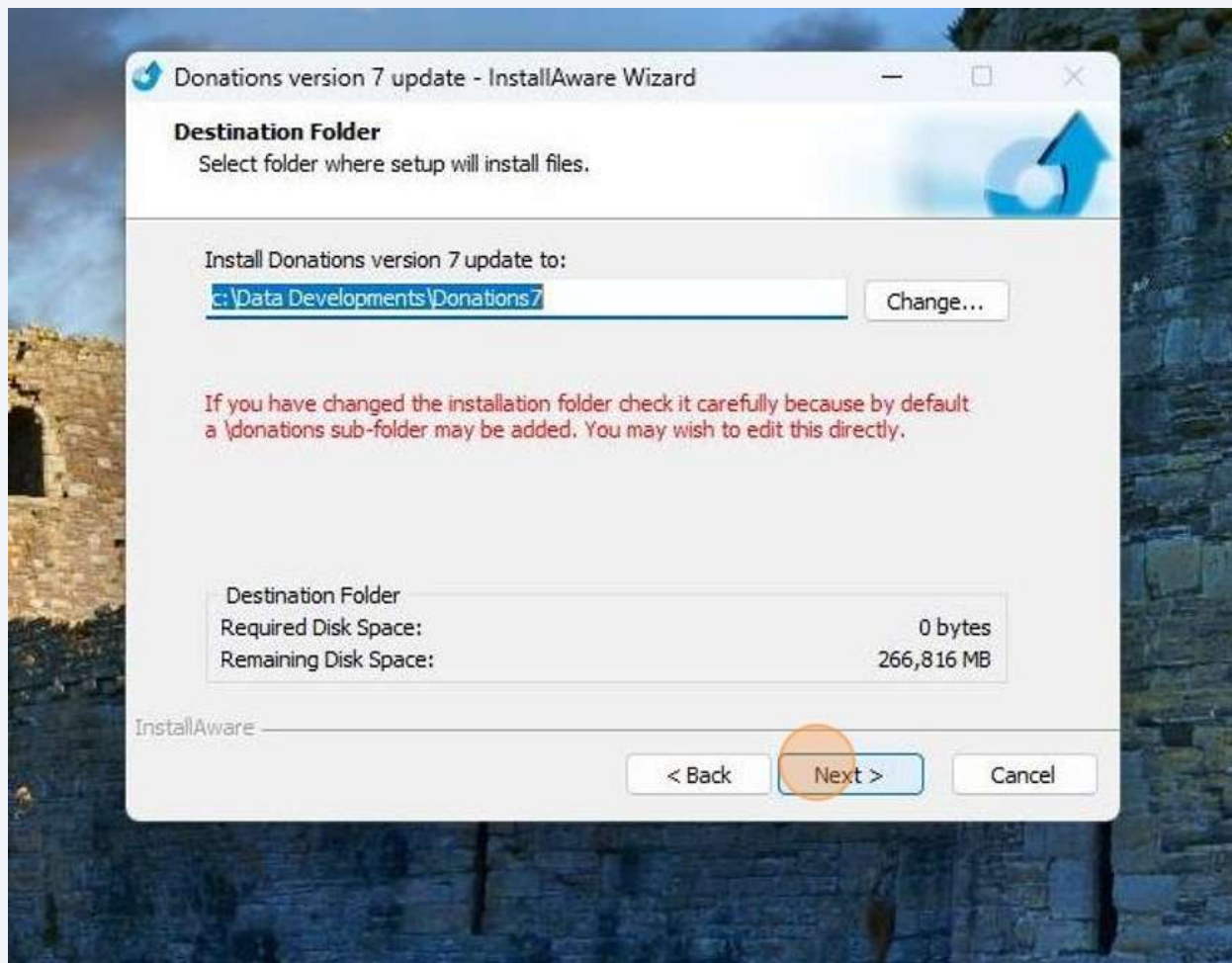
Click "Next >"



10 Click "Next >"

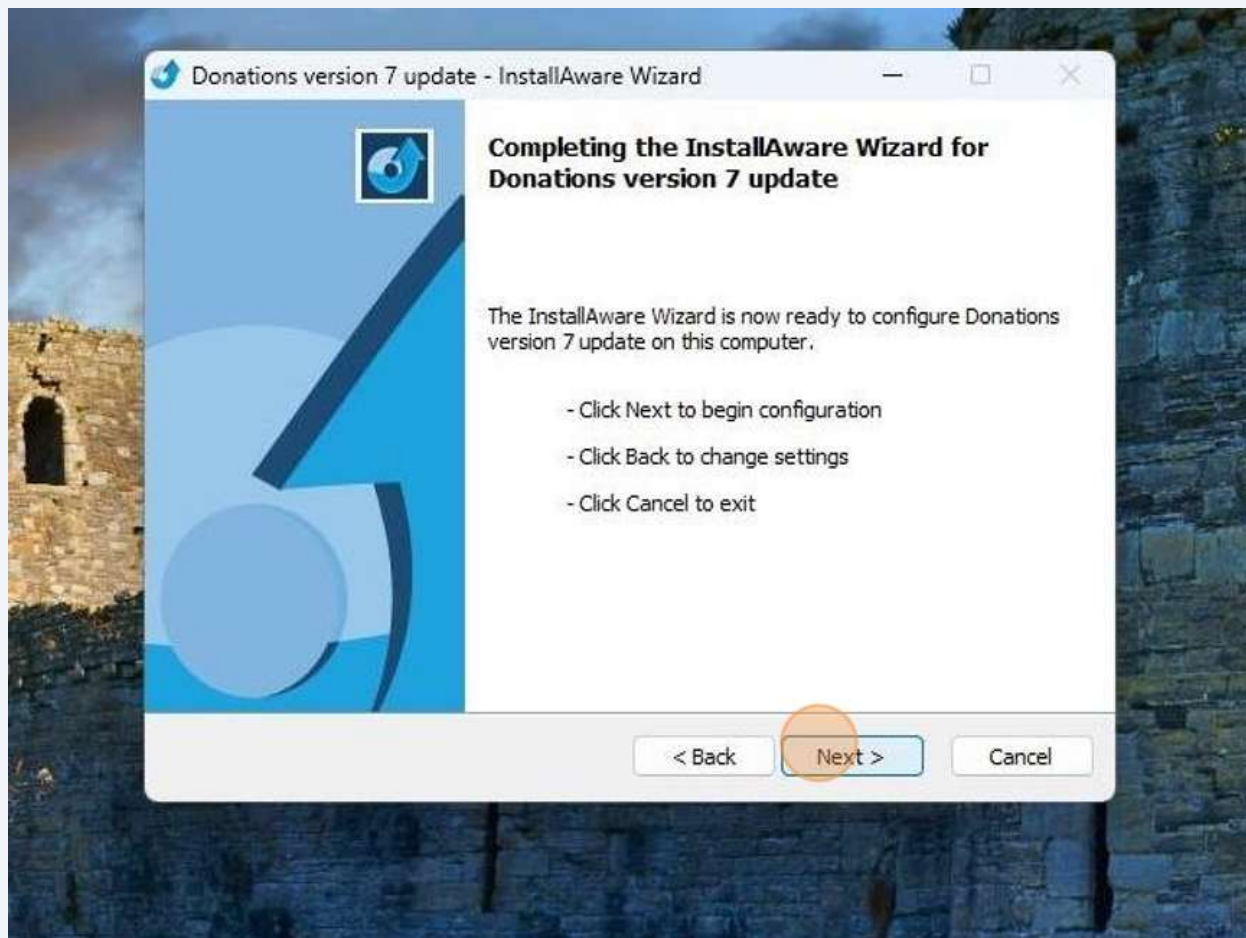


11 Click "Next >"

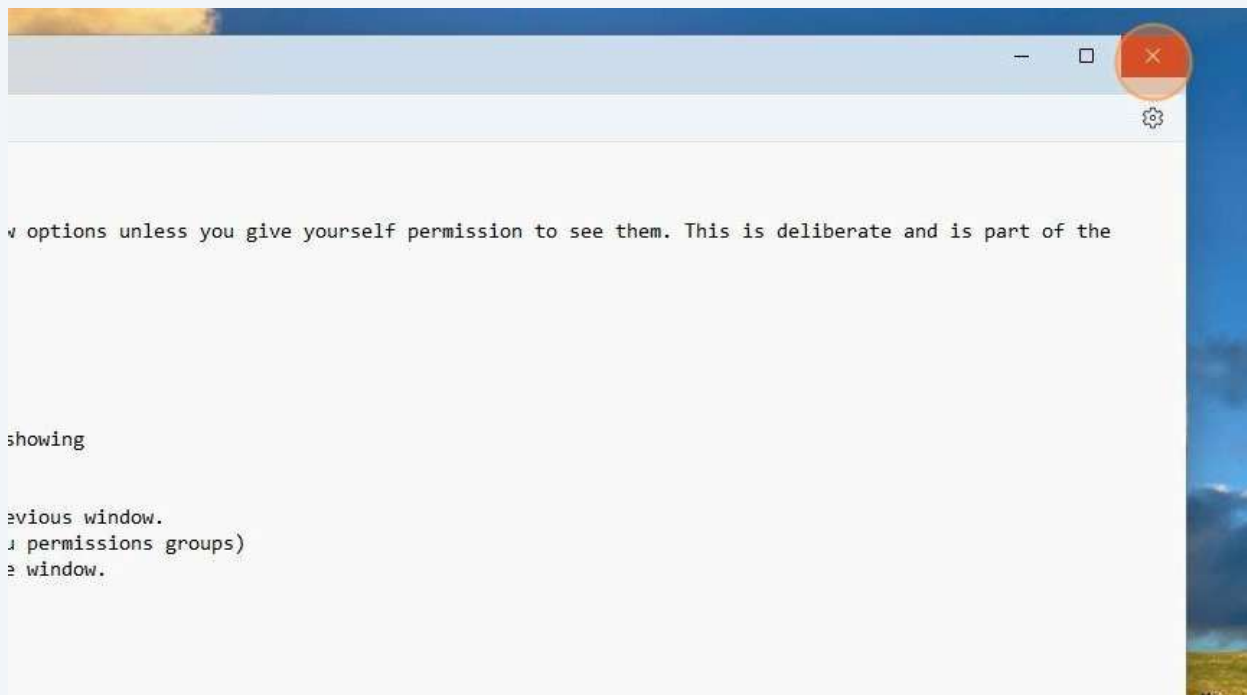


Alert! If you unable to continue please go to Step 15.

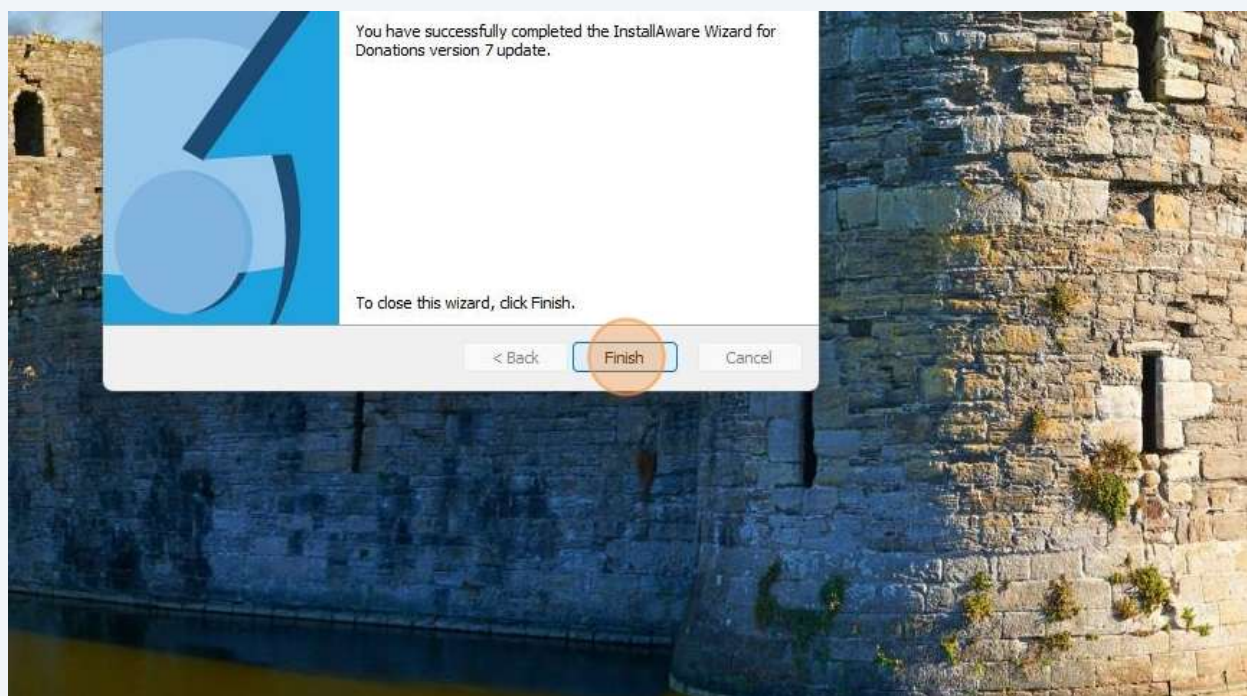
12 Click "Next >"



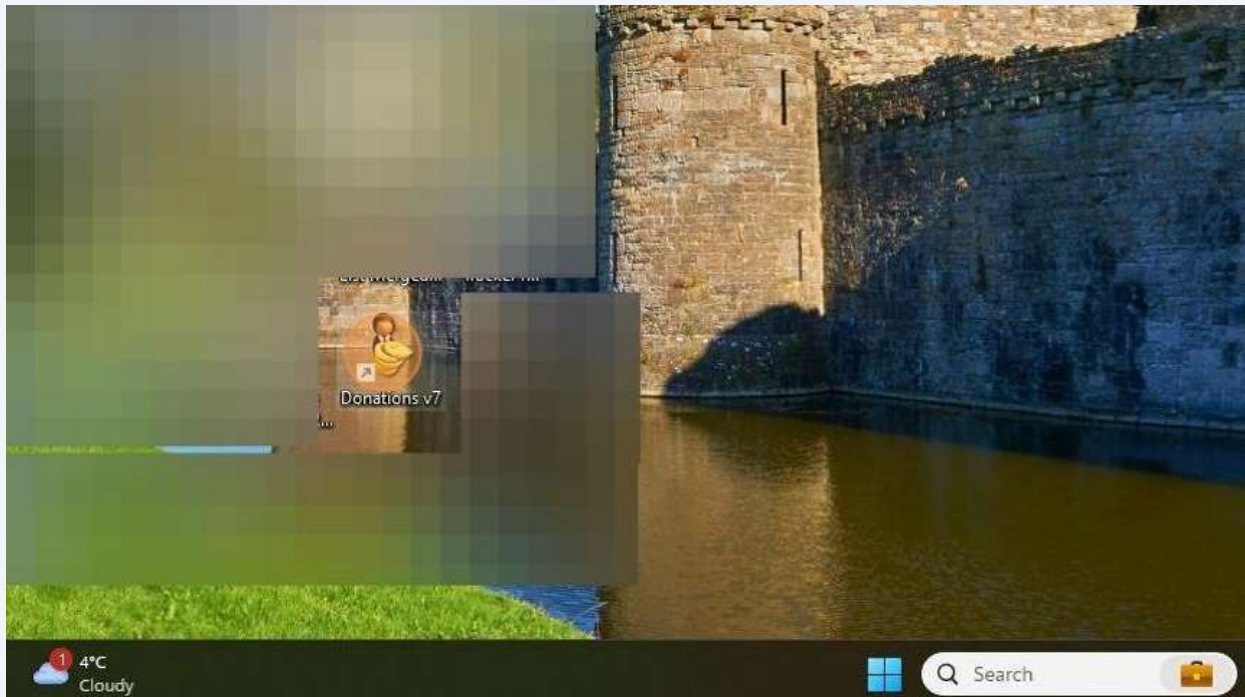
13 Click "Close"



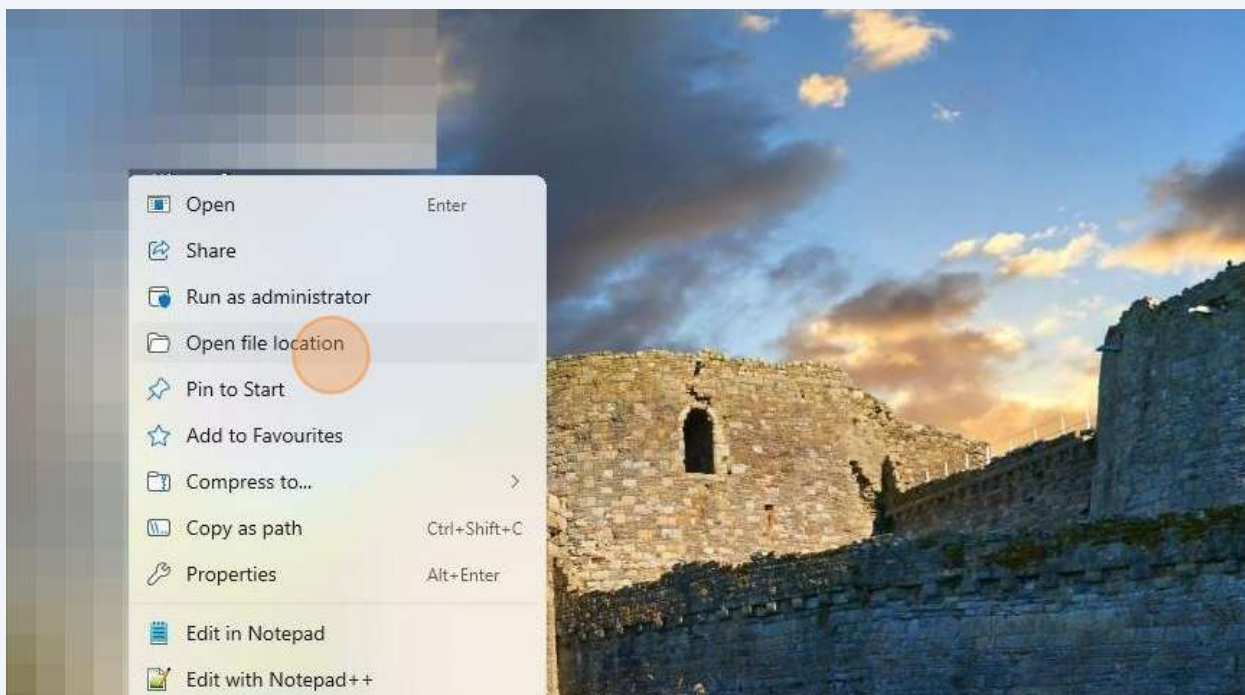
14 Click "Finish"



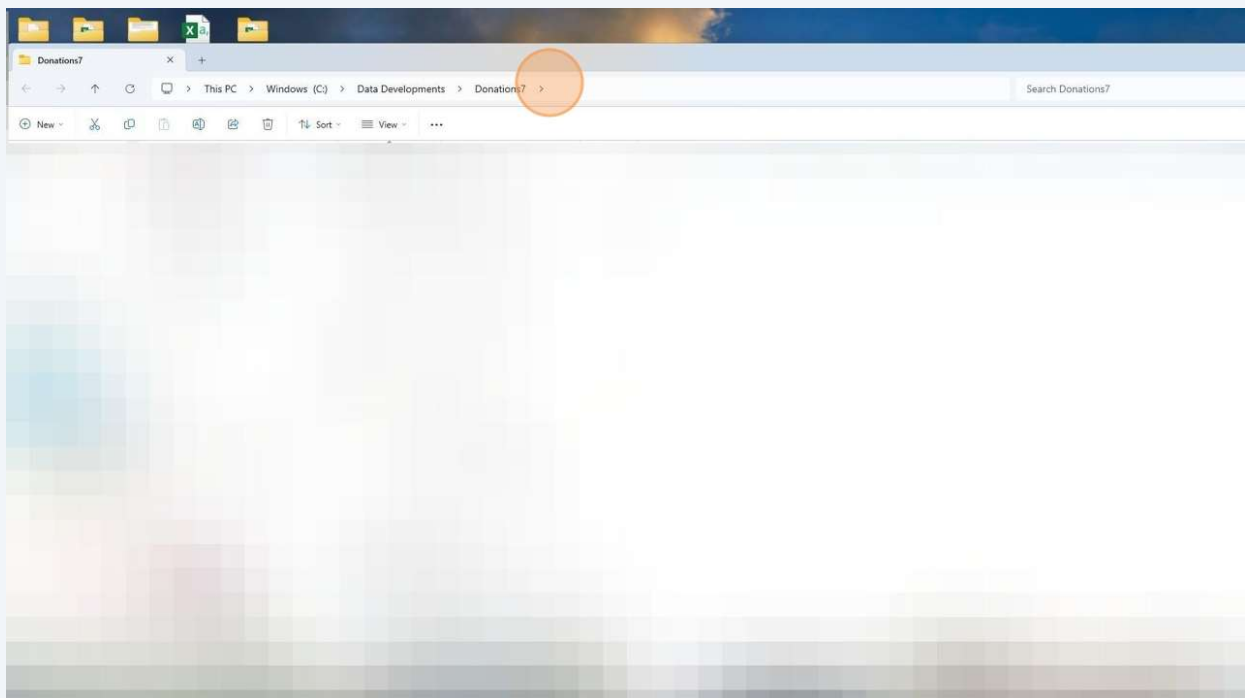
15 Right click "Donations v7"



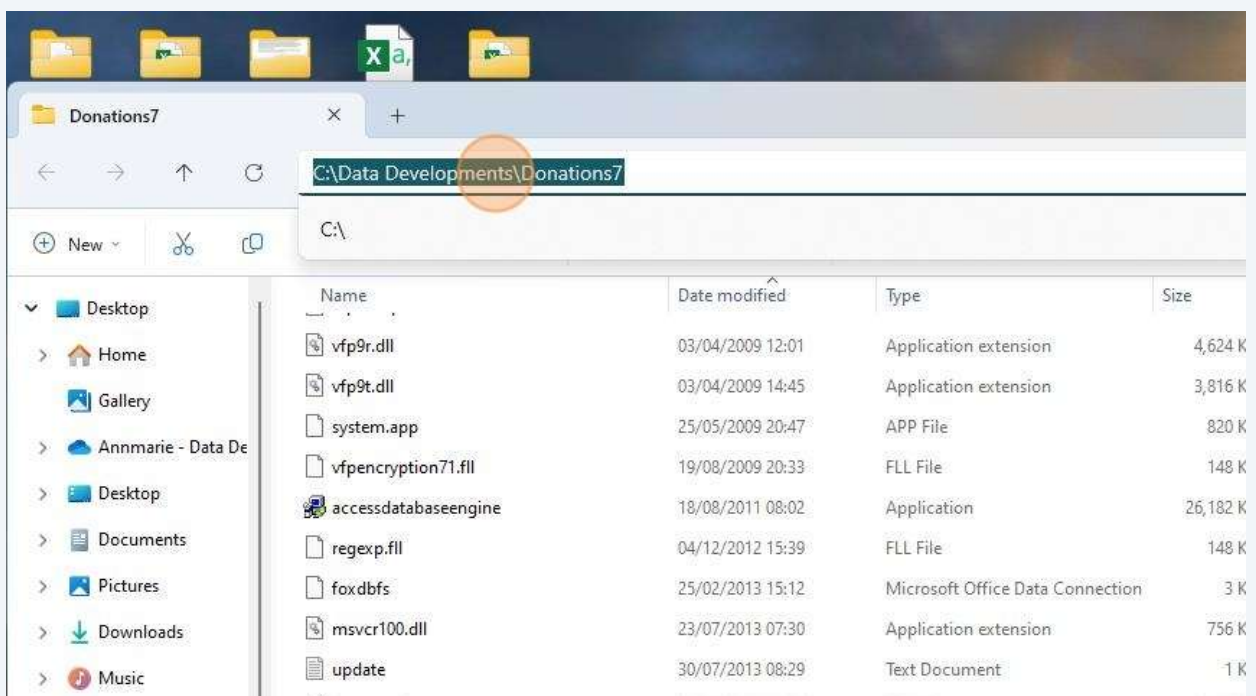
16 Click "Open file location"



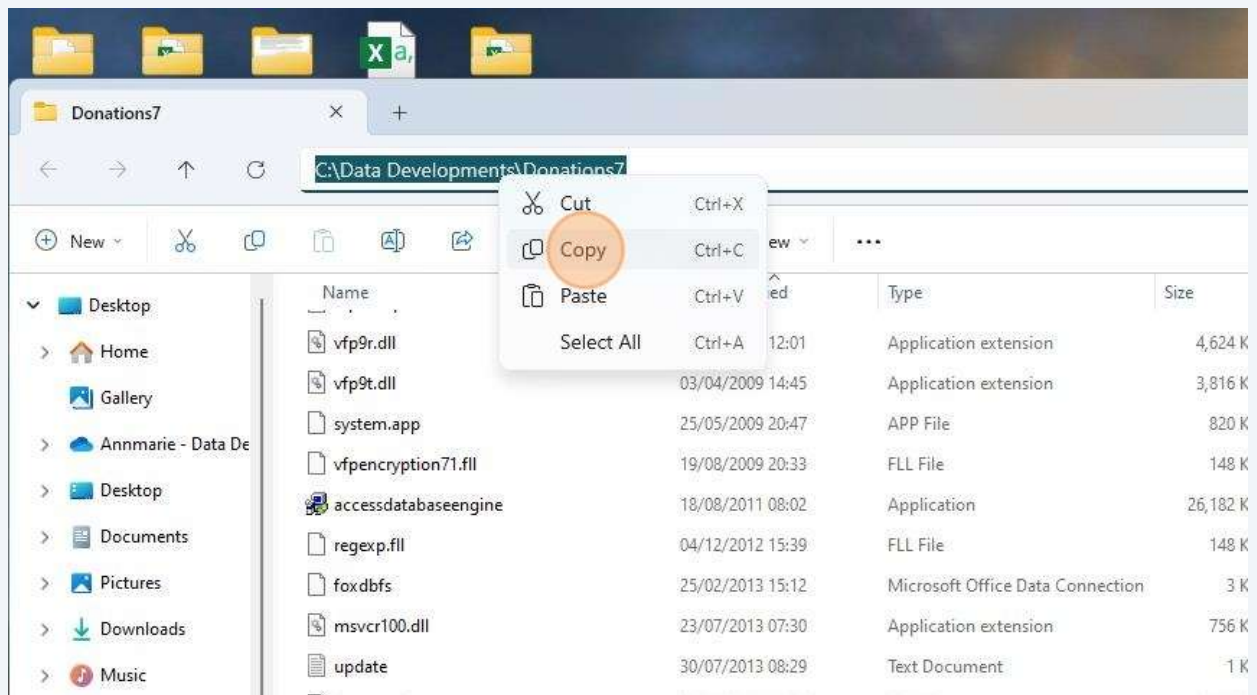
17 Click in the bar here to highlight the directory.



18 Right click



19 Click "Copy"



20 Paste the location here and click Next and continue.

